



XE245LC **HEAVY EXCAVATOR**



www.xcmgmachinery.com.au

INDUSTRY EXPERTISE

XCMG Sales & Service is one of Australia's **fastest growing** construction and mining equipment suppliers.

Offering premium quality excavators, wheel loaders, compaction rollers, graders and mini excavators, XCMG Sales & Service has **the products and the support** to keep you working on any job site.

MACHINERY SALES

XCMG Sales & Service know construction and mining equipment. You can count on our **dedicated and knowledgeable team** of product experts to take the time to understand and satisfy your machinery needs by recommending the **right solution for the job**.

RENTALS & HIRE

If you need a high-performance machine with reliability you can **trust**, and the flexibility of hiring, we have you covered.

Our fleet is diverse, with machines to suit almost any job. Furthermore, because our rental fleet is maintained by factory-trained technicians, you can be confident that you'll not only be getting the best machines on the market, but that it's going to **work as hard as you do**, day-in day-out.

AFTERMARKET SUPPORT

We're here to help keep you and your machine working. With an **exceptional over-the-counter fill rate** on spare parts, you're assured that when you buy a machine from XCMG Sales & Service, you'll be looked after throughout your machine's entire lifetime, from start to finish.

Every service job is as important to us as it is to you, and with a dedicated team of machinery technicians, we have ample resources to look after any of your machine repairs or servicing requirements **quickly and efficiently**.



ABOUT XCMG

The World's 3rd largest manufacturer of construction and mining equipment.

Founded in 1943, 8 decades of experience.

Manufacturing in USA, Germany, China, Brazil and India.

Extensive supply chain and dealer network throughout Australia.

Deep relationships with corporate giants: Rio Tinto, BHP and MMG in Australia.

MINI / LARGE EXCAVATORS
1 to 49 Tonne

WHEEL LOADERS
5 to 100 Tonne

COMPACTION ROLLERS
1.5 to 30 Tonne Smooth & Padfoot

GRADERS
7.5 to 70 Tonne

National Hotline:
1300 837 391

NEWCASTLE (NORTHERN NSW)

Situated in Hexham on the Pacific Highway. Serves the Northern NSW region from the Hawkesbury River to the QLD border. Company headquarters: complete sales, service (in-house / field), hire, parts and corporate shared services.

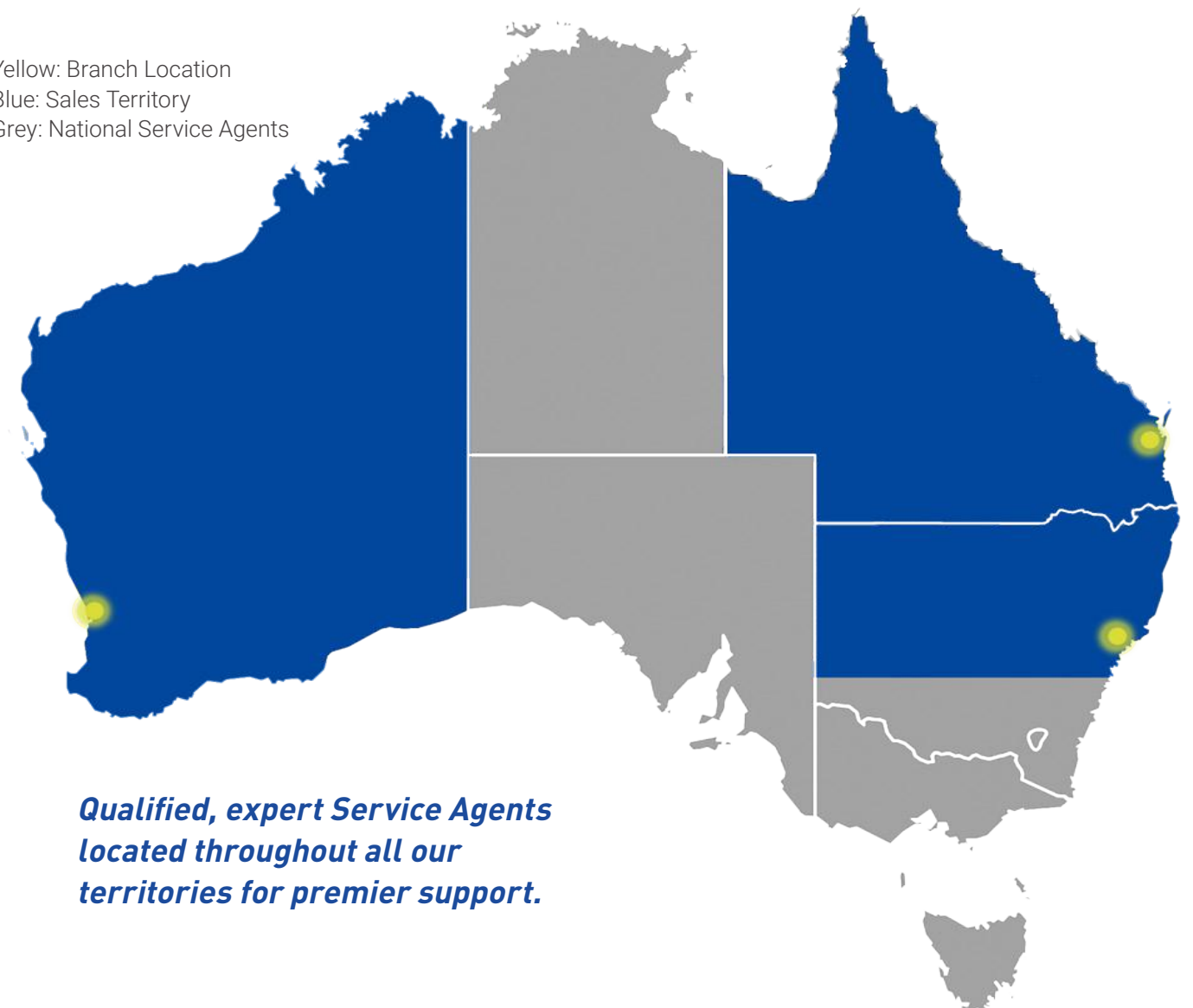
PERTH (WESTERN AUSTRALIA)

Located in Welshpool just 15 minutes from the CBD, serves the entire state of Western Australia. Sales, rentals, parts and service, including field service capabilities to various mine sites throughout WA.

BRISBANE (QUEENSLAND)

Situated 30 minutes from the CBD, conveniently located to serve all areas of Queensland. Sales, rentals, parts and service (in-house and field).

Yellow: Branch Location
Blue: Sales Territory
Grey: National Service Agents



Qualified, expert Service Agents located throughout all our territories for premier support.

PERFORMANCE, RELIABILITY & VALUE

GLOBAL DOMINANCE

XCMG is the World's 3rd largest construction machinery manufacturer, with branches dealers and service agents throughout Australia.

CUMMINS ENGINE

Renowned Cummins QSB7 Tier III emission certified engine delivering a huge 150kW / 201hp of power, plus exceptional reliability and longevity.

KAWASAKI COMPONENTS

Premium quality Kawasaki main pump, main valve and slew motor are designed for efficient performance, exceptional reliability, maximum longevity and minimal service requirements.

RENOWNED CUMMINS QSB7 ENGINE



DESIGNED FOR PERFORMANCE

With some of the best componentry, hydraulics, power and operability features available, the XE245LC is made to work with maximum efficiency.

LONG UNDERCARRIAGE

9 lower rollers on each side of the undercarriage ensures excellent stability, tractive effort and ground pressure on challenging or steep terrain.

NABCO TRAVEL MOTOR

Nabco travel motors are renowned globally for their excellent performance, efficiency and extensive lifetime of service.



EASY SERVICE ACCESS TO COMPONENTRY



COMFORTABLE CABIN

The ROPS / FOPS cabin is air conditioned for comfortable climate control, offers front and top window guards, and an ergonomic, spacious layout.

SAFETY VALVES

With safety at the forefront of the XE245LC's design, crane valves are fitted to both the boom and arm cylinders to ensure maximum burst protection.

UNMATCHED SUPPORT

Product experts at your local dealer provide exceptional support throughout your machine's lifetime: operation, maintenance and service from the delivery date through to its very last day on the job.

PREMIUM HYDRAULICS

2x241 LPM, bi-directional piping, quick hitch, hammer piping, adjustable pressure flow monitor, multiple attachment control system, dual proportional controls.

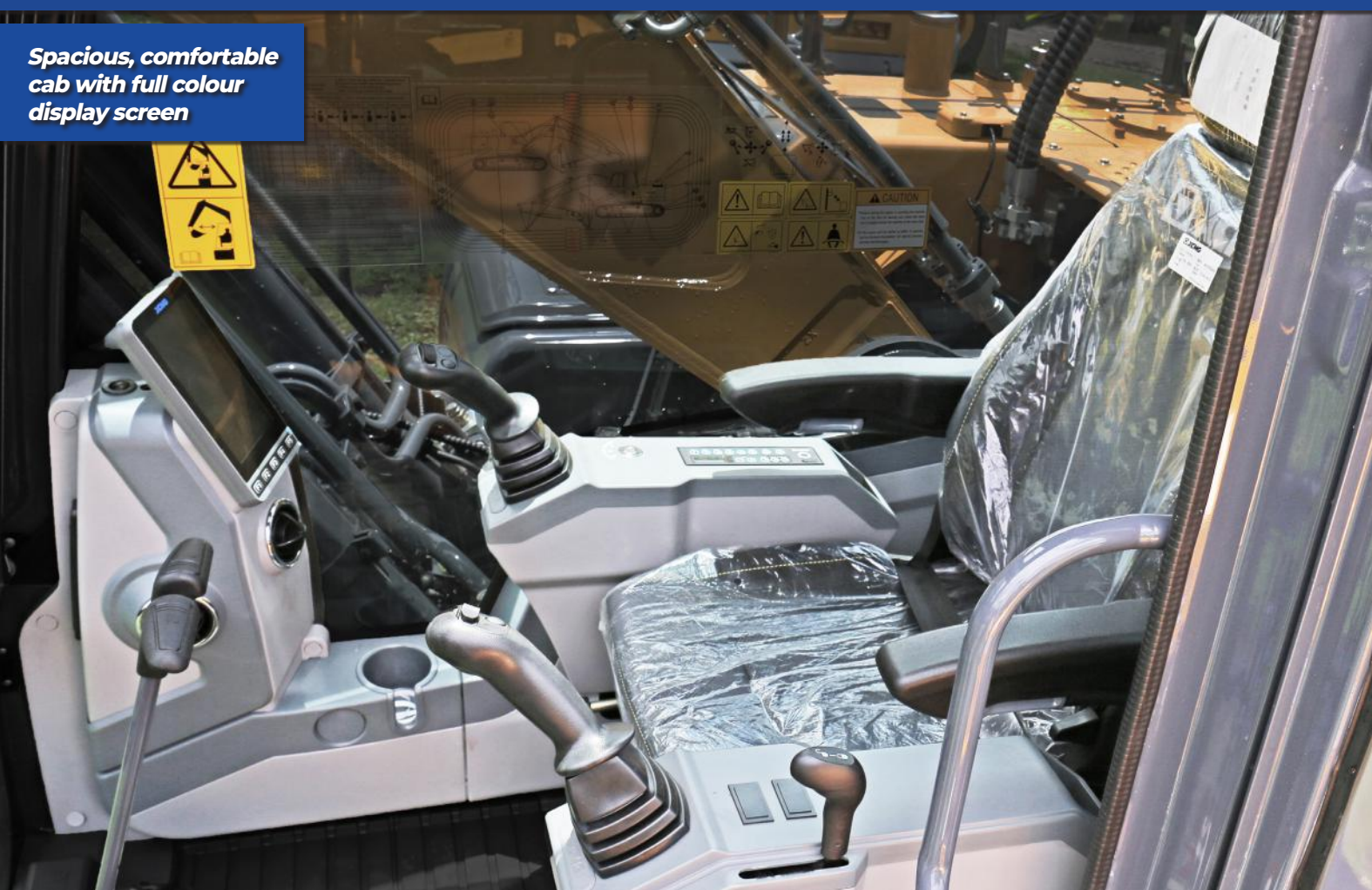
ADDITIONAL FEATURES

Bump rails on each side, hitch alarm, AM/FM radio with USB, travel alarm, jump start receptacle, lockable battery and starter isolators, and more.

RELIABILITY & TRUST

XCMG's key focus is the complete satisfaction and success of every machine owner - making your business as profitable as possible.





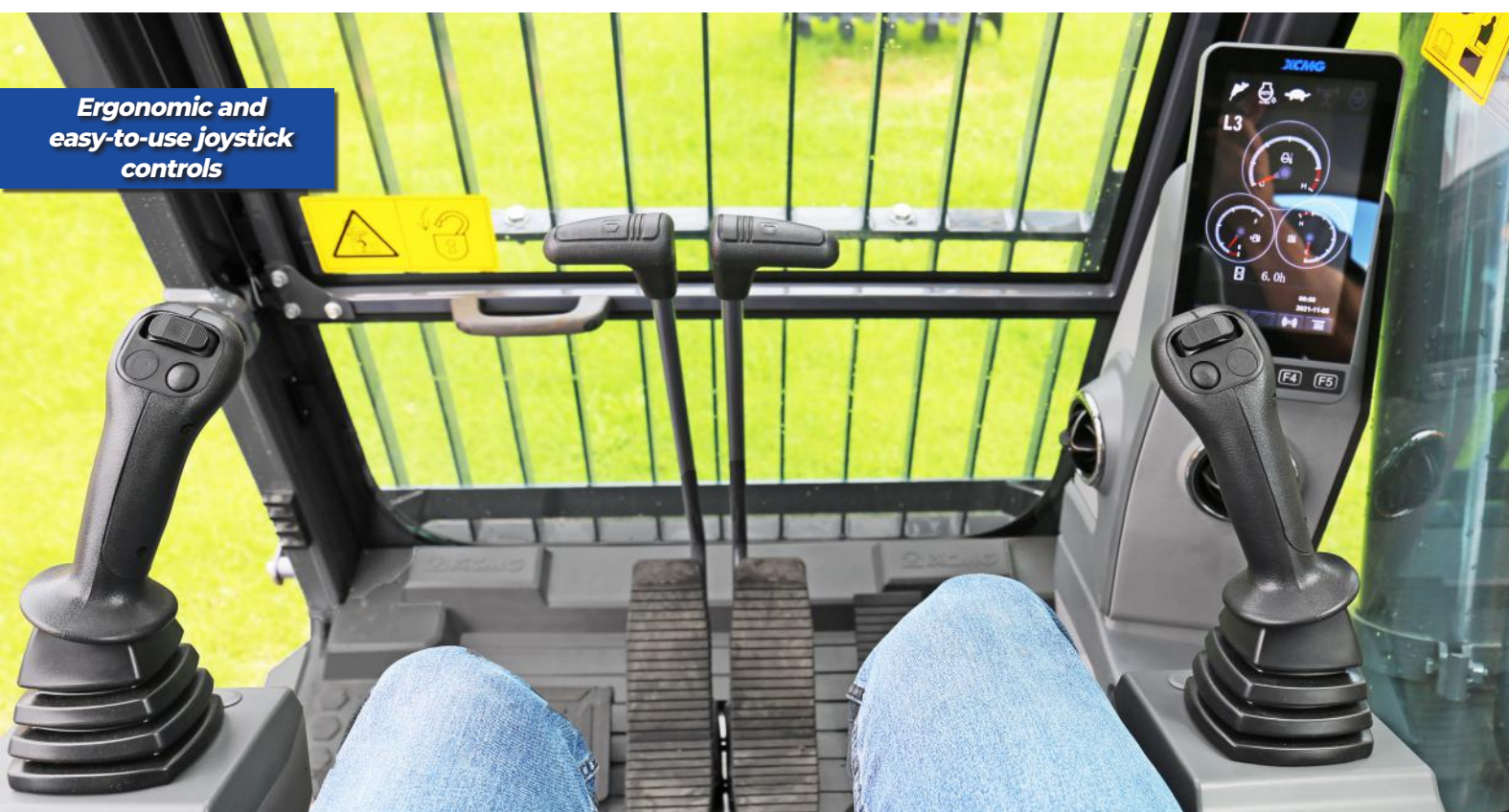
Spacious, comfortable cab with full colour display screen



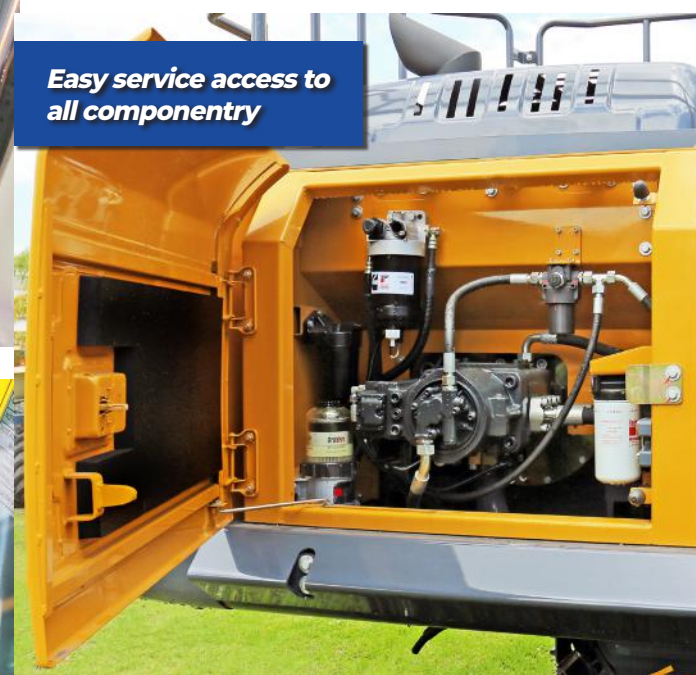
Renowned Cummins QSB7 201hp Engine



Heavy duty protective cabin guarding



Ergonomic and easy-to-use joystick controls



Easy service access to all componentry



Rear of body power controls and e-stops

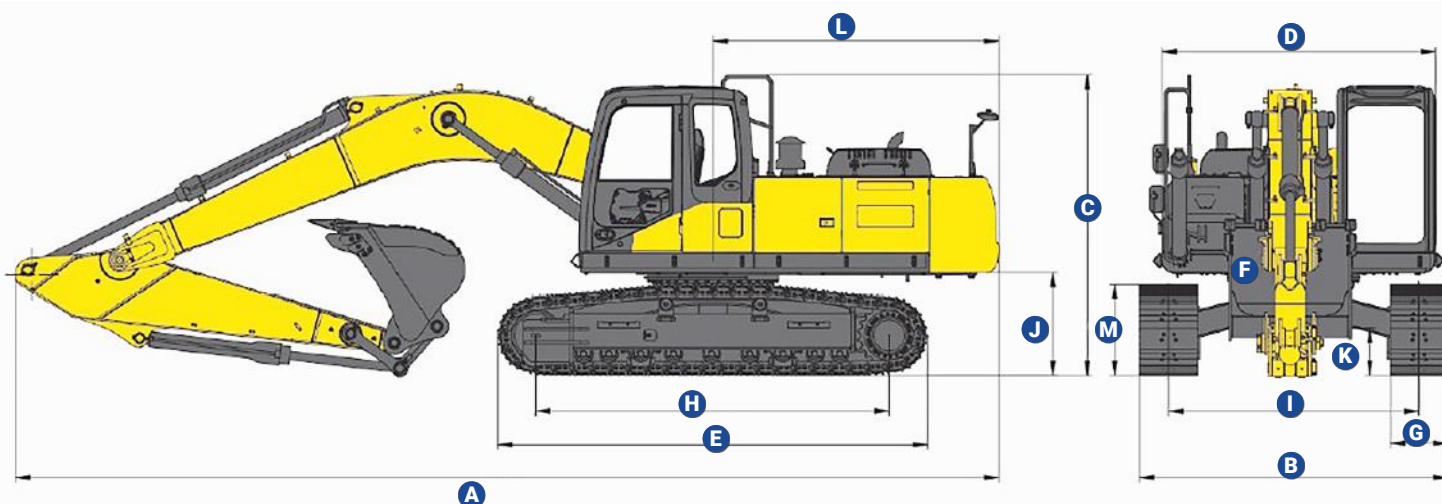


Excellent inner cabin storage (behind seat)



Bump rails on both sides of machine body

XE245LC SPECIFICATIONS



XE245LC	A	B	C	D	E	F	G
Specification	Ovr Length	Ovr Width	Ovr Height	Platform Width	Track Length	Chassis Width	Shoe Width
Dimensions (mm)	10170	3190	3110	2830	4445	3190	600

H	I	J	K	L	M
Between Rollers	Track Gauge	C/weight Clearance	Ground Clearance	Tailswing	Track Height
3655	2590	1062	490	2955	942

KEY PERFORMANCE SPECIFICATIONS

Engine	Model	Cummins QSB7
	Electronic Injection	Yes
	Water Cooling	Yes
	Turbocharged	Yes
	Air-to-Air Intercooler	Yes
	Number of Cylinders	6
Main Performance	Rated Power	150 kW / 201 hp
	Max Torque / Speed	825 Nm / 1250 rpm
	Displacement	6.7 L
	Travel Speed	3.6 / 5.3 km/h
	Swing Speed	11.2 rpm
	Gradeability	35 Degrees
	Ground Pressure	56.7 kPa
	Bucket Digging Force	185 kN
	Arm Digging Force	129 kN
	Max Tractive Force	199 kN

HYDRAULICS, OIL & WORKING RANGES

Hydraulic System	Rated Flow (Main Pump)	2 x 241 LPM
	Main Relief Pressure	34.3 / 37 MPa
	Travel System Pressure	34.3 MPa
	Swing System Pressure	25 MPa
	Pilot System Pressure	3.9 MPa
Oil Capacity	Fuel Tank Capacity	400 L
	Hydraulic Tank Capacity	220 L
	Engine Oil Capacity	19.5 L
Working Range	Max Dig Height	10048 mm
	Max Dump Height	7123 mm
	Max Dig Depth	6972 mm
	Max Vertical Wall Dig	5567 mm
	Max Dig Radius	10240 mm
	Min Swing Radius	3510 mm

Note: specifications listed above are correct at October 2021 and are subject to change any time. For additional information or specifications, visit www.xcmgmachinery.com.au.