



# XGS22K

MOBILE ELEVATING WORK PLATFORM

Comply with AS/NZS/CE/ANSI/CSA



# XGS22K

## MOBILE ELEVATING WORK PLATFORM

### OVERVIEW AND FEATURES

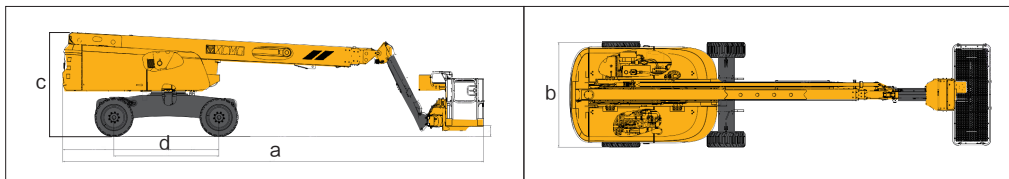
The XGS22K mobile lifting work platform is an innovative straight-arm self-propelled mobile lifting work platform with excellent performance, efficiency, powerful drive and easy operation. With a maximum load capacity of 460kg, the XGS22K is the industry leader in working height and range, meeting the needs of large loads and large working surfaces.

### PERFORMANCE ADVANTAGES AND FEATURES

- The maximum load capacity of 460kg is the largest in the same metre class, with industry-leading working height and range, meeting the needs of large loads and large working surfaces.
- The combined boom consists of a double-linked tower boom + 3 sections of telescopic boom + 1 section of small flying boom structure, achieving the lowest storage height of a straight-arm self-propelled mobile lifting work platform in its class, making storage and transportation more convenient.
- The combination of double-link and telescopic boom synchronous lifting technology is used to dynamically adjust the centre of gravity of the whole vehicle and improve the stability of the whole vehicle. Four-wheel drive system, off-road wide tyres and axle balancing system provide the equipment

with excellent drive and road adaptability.

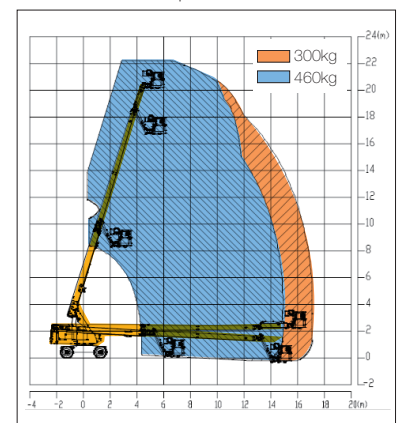
- Multi-load envelope control technology for real-time load monitoring and efficient utilisation of the boom's load-bearing capacity, giving the product a leading edge in operational performance. The self-balancing extension mechanism improves the safety of the telescopic mechanism and effectively extends the service life of the wire rope.
- The electrical control system adopts distributed control technology based on PLC and CAN bus, which can realize many functions such as automatic leveling, platform load weighing, dynamic monitoring and fault alarm.
- The whole machine mainly adopts hard pipe arrangement, which makes the whole machine pipeline more neat and beautiful, and effectively reduces the failure rate of oil pipe wear.



### OPTIONS

- Solid tyres
- Half height mesh platform
- Platform anti-squeezer assist rail
- Mechanical anti-extrusion device
- Air hose connection to platform option
- Tool tray
- Work light assembly
- Aircraft protection device
- Fall protection kit
- AC power cable connection to platform

Work Curve Graph



### MAIN PARAMETER

Item	Metric	Imperial
Working Height	22m	72 ft 2 in
Platform Height	20m	65 ft 7 in
Working radius	17.2m	56 ft 5 in
Lift capacity	300Kg/460(Limits)kg	661 lbs/1014 (Limits)lbs
Boom luffing range	-3~ +73°	-3~ +73°
Fly jib luffing range	-65~ +70°	-65~ +70°
Turntable rotation	360°	360°
Platform rotation	160°	160°
Turntable tail swing -stowed	1310mm	4 ft 4 in
Drive Speed (stowed/raised)	6.3 Km/h/0.6 km/h	3.9 mph/0.4 mph
Turning Radius (inside)	3.28m	10 ft 9 in
Turning Radius (outside)	6m	19 ft 8 in
Ground clearance	230mm	9.1 in
Gradeability (counterweight end up or down)	45% /30%(24°/17°)	45% /30%(24°/17°)
Tires	36×14-20; 355/55D625	36×14-20; 355/55D625
Power source	12V DC proportional control	12V DC proportional control
Rated power	36.5kW/(2600r/min)	36.5kW/(2600r/min)
Fuel tank	150L	150L
Hydraulic tank	120L	120L
Weight	12460kg	27470 lbs
Platform size	2440mm×900mm×1150mm	8 ft×3 ft×3.8 ft
a. Length(stowed,in operation)	10.08m	33 ft 1 in
Length (Transport, short arm folded down)	9.85m	32 ft 4 in
b. Full width	2.49m	8 ft 2 in
c. Full height	2.53m	8 ft 4 in
d. Wheelbase	2.5m	8 ft 2 in
Engine type & Engine power rating	Kubota V2403BM-DI-CTO4e (stage III) 36.0kW/2600rpm	Kubota V2403BM-DI-CTO4e (stage III) 36.0kW/2600rpm